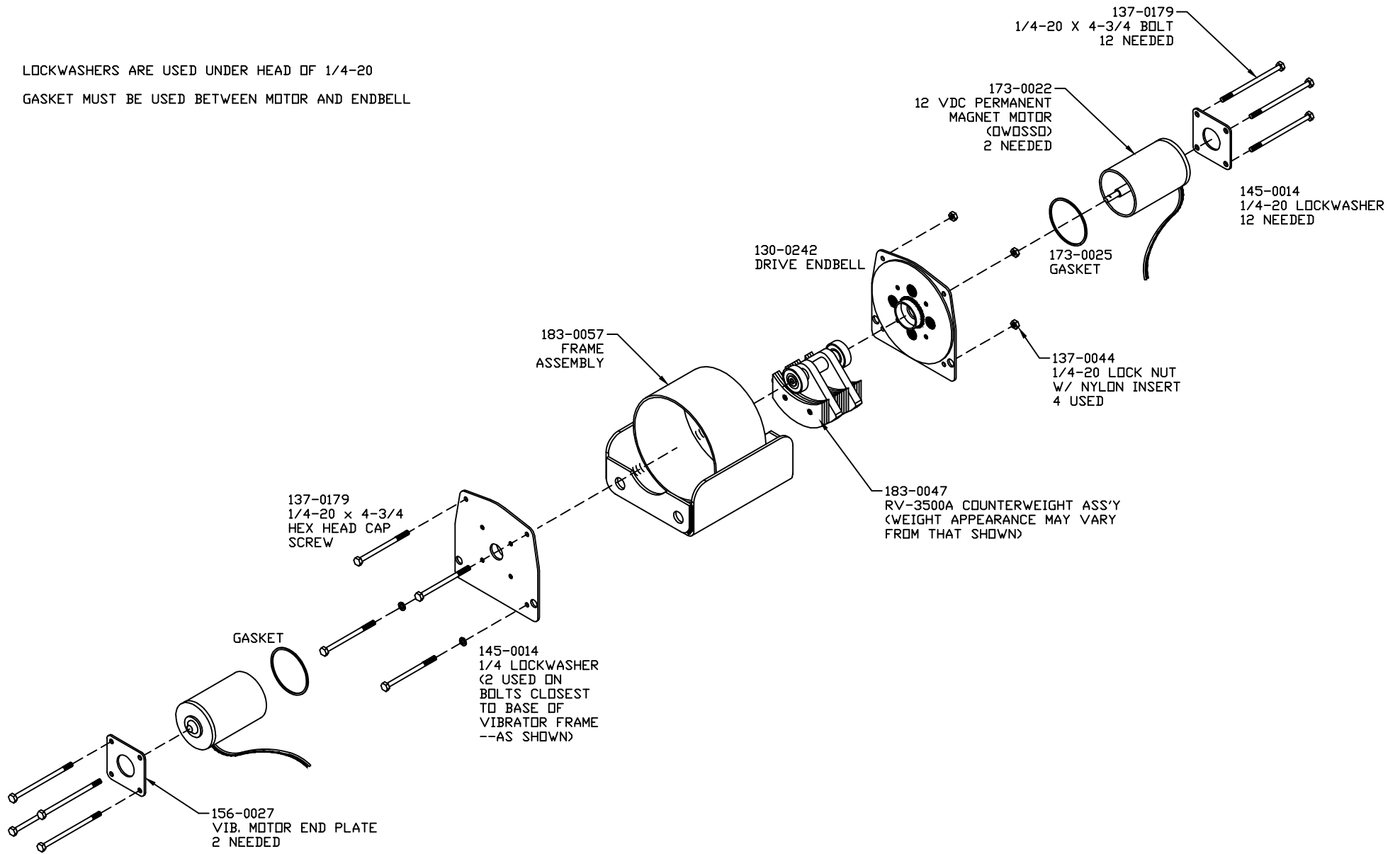


REV. DATE DESCRIPTION:
 A 4/16/04 ADDED NOTE ON WEIGHT APPEARANCE

NO: 183-0059

LOCKWASHERS ARE USED UNDER HEAD OF 1/4-20
 GASKET MUST BE USED BETWEEN MOTOR AND ENDBELL



TENDAIRE / ELECTROL

NAME: RV-3500B
 VIBRATOR ASSEMBLY

ON ALL MACHINE DIMENSIONS ALLOW ± 0.005
 UNLESS OTHERWISE SPECIFIED.

MATERIAL:

PART TO:

SCALE: NONE

DATE: 08/19/05

DWG BY: A.M.L.